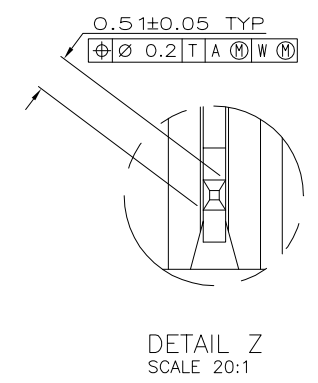
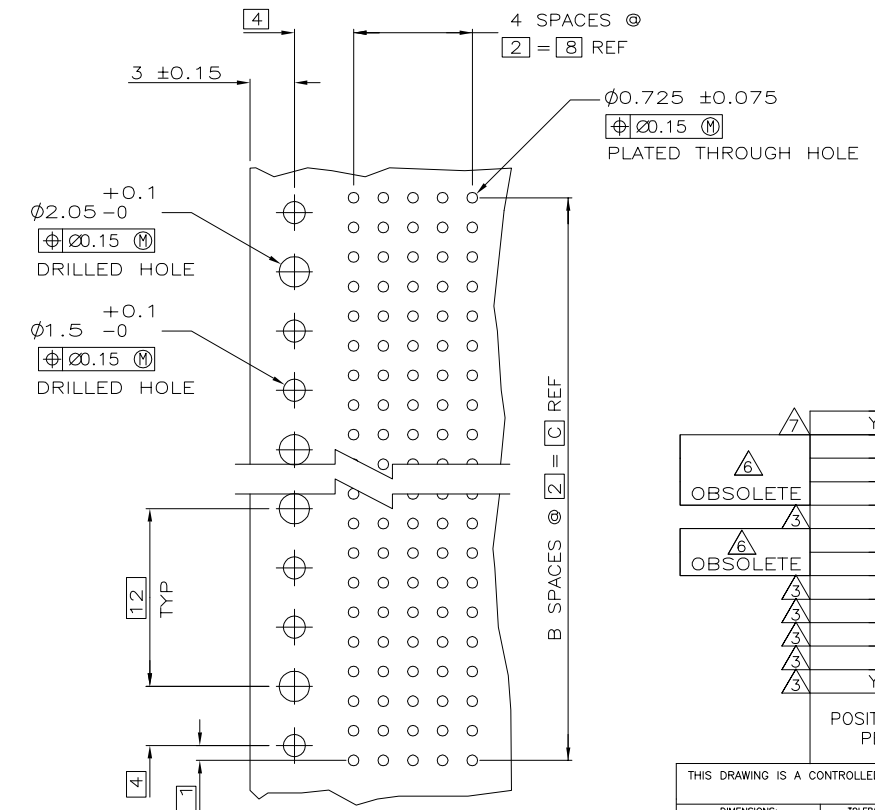
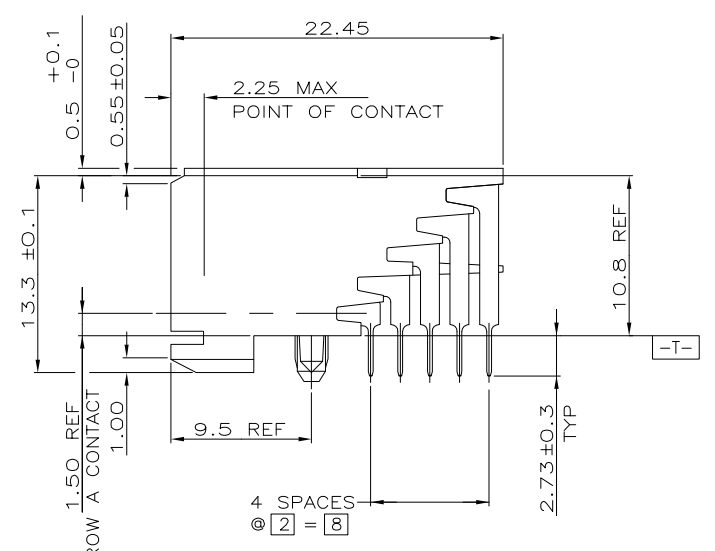
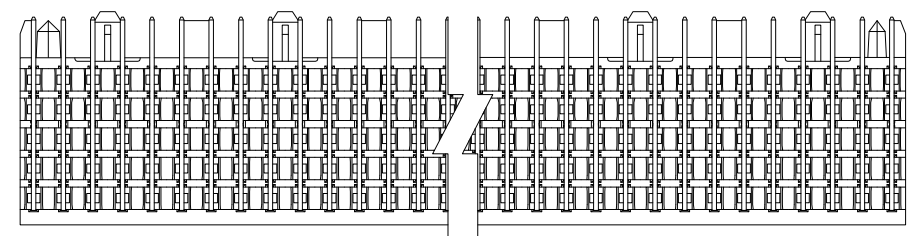
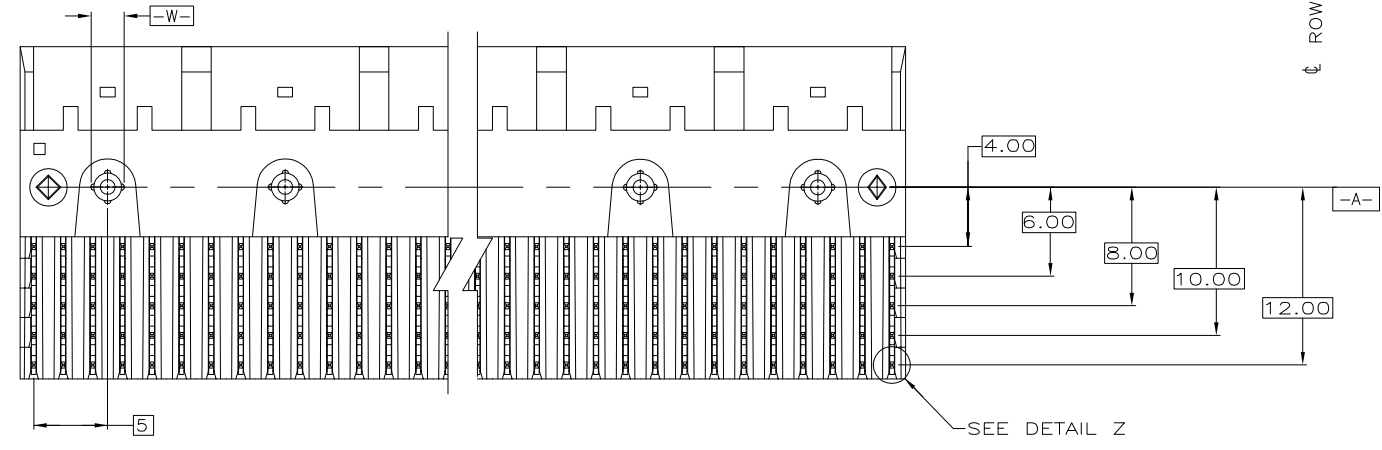
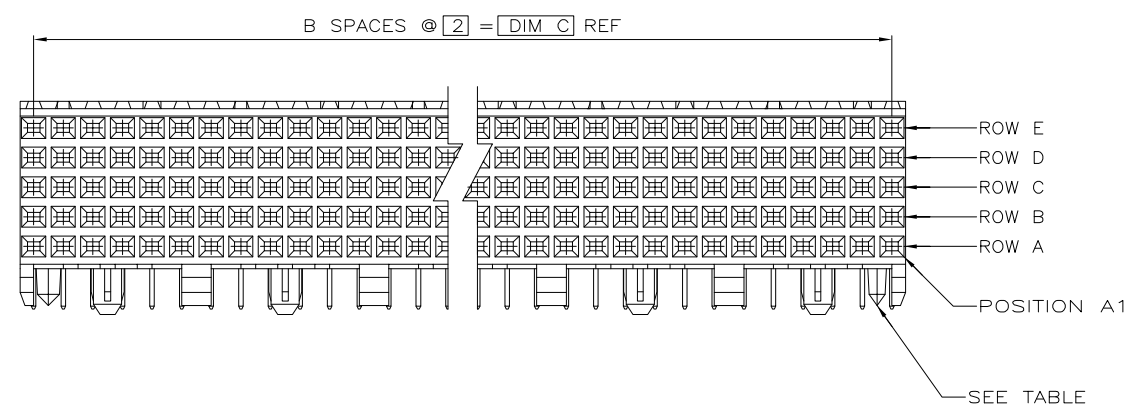
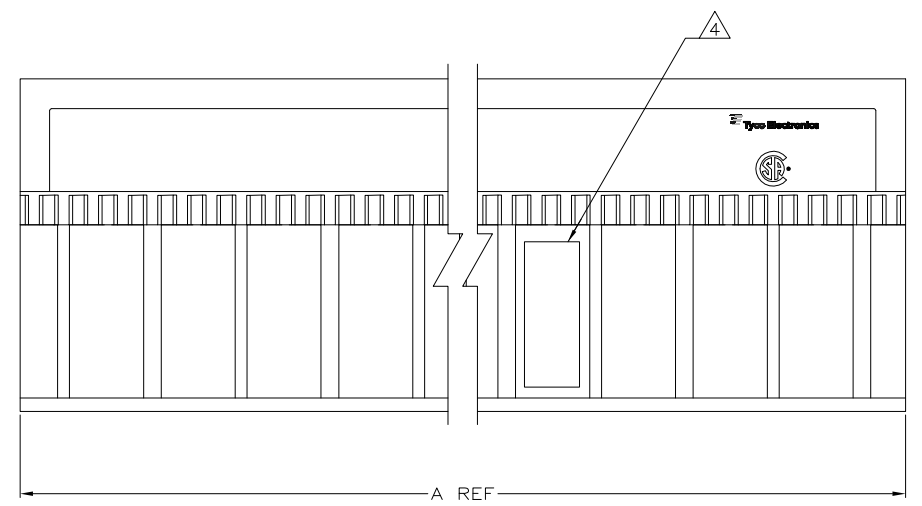


LOC	DIST	#	DATE	BY	APP'D
AD	00	02	16APR08	DH	AS
		A	03NOV15	DS	FY



- △ 1 HOUSING MATERIAL: LIQUID CRYSTAL POLYMER
COLOR: NATURAL.
- △ 2 CONTACT MATERIAL: PHOSPHOR-BRONZE.
- △ 3 CONTACT FINISH:(A)
UNDERPLATE (ENTIRE CONTACT):
0.00127 MIN NICKEL PER SAE-AMS-QQ-N-290
ON MATING SURFACES:
CONFORMS TO ALL TESTING SPECIFIED FOR TELCORDIA UNCONTROLLED ENVIRONMENT.
ON LEADS:
0.00381 MIN MATTE TIN PER ASTM B 545 OVER UNDERPLATE.
LUBRICATION (MIN MATING SURFACES):
SURFACE CONDITIONER AFTER PLATING.
- △ 4 PART MARKING LOCATED APPROXIMATELY AS SHOWN.
- △ 6 OBSOLETE PARTS: OBSOLETE CIS STREAMLINING PER D.RENAUD/D.SINISI
- △ 7 CONTACT FINISH:(A)
UNDERPLATE (ENTIRE CONTACT):
0.00127 MIN NICKEL PER SAE-AMS-QQ-N-290
ON MATING SURFACES:
0.00076 MIN GOLD PER ASTM B-488 OVER UNDERPLATE.
ON LEADS:
0.00381 MIN MATTE TIN PER ASTM B 545 OVER UNDERPLATE.
LUBRICATION (MIN MATING SURFACES):
SURFACE CONDITIONER AFTER PLATING.

RECOMMENDED CIRCUIT PATTERN
PER IPC-D300 TYPE II, CLASS C
(COMPONENT SIDE)

REV	DESCRIPTION	DATE	BY	APP'D
02	REVISED PER ECO-08-009053	16APR08	DH	AS
A	REVISED PER ECO-15-015007	03NOV15	DS	FY

POSITIONING PEGS	C	B	A	NO OF SIGNAL POSN	PART NUMBER	
△ 7	YES	10	3	11.88	30	3-5223004-1
△ 6	NO	130	65	131.88	330	1-5223004-1
△ 6	NO	118	59	119.88	300	1-5223004-0
△ 3	NO	106	53	107.88	270	5223004-9
△ 3	NO	94	47	95.88	240	5223004-8
△ 3	NO	82	41	83.88	210	5223004-7
△ 3	NO	70	35	71.88	180	5223004-6
△ 3	NO	58	29	59.88	150	5223004-5
△ 3	NO	46	23	47.88	120	5223004-4
△ 3	NO	34	17	35.88	90	5223004-3
△ 3	NO	22	11	23.88	60	5223004-2
△ 3	YES	10	3	11.88	30	5223004-1

THIS DRAWING IS A CONTROLLED DOCUMENT.

DMN: B.MCMASTER 19NOV04
CHK: R.WERTZ 19NOV04
APP'D: R.WERTZ 19NOV04

TE Connectivity

ASSEMBLY, RECEPTACLE, SIGNAL, RIGHT ANGLE, Z-PACK 2mm FB, 5 ROW, SOLDER LEAD

APPROVALS: DIMENSIONS: mm; TOLERANCES UNLESS OTHERWISE SPECIFIED: 0 PLC ±, 1 PLC ±, 2 PLC ± 0.13, 3 PLC ±, 4 PLC ±; ANGLES: °; FINISH: △ 1, △ 2, △ 3, △ 5

MATERIAL: △ 1, △ 2; FINISH: △ 3, △ 5

SIZE: A1; CAGE CODE: 00779; DRAWING NO: 5223004; WEIGHT: -; RESTRICTED TO: -

CUSTOMER DRAWING; SCALE: 4:1; SHEET: 1 OF 1; REV: A